



गठिला भूखण्ड
आवास योजना
सबका भविष्य, सबका भारत



महिला
सशक्तिकरण केंद्र
LIVING WITH DIGNITY



Digital India
Power To Empower



75
Azadi Ka
Amrit Mahotsav

TM



मध्यम्वर्गीय भूखण्ड आवंटन

MVBA

Swarna Nagri Ayodhya



इSwarna Nagri - 2

मध्यम्वर्गीय भूखण्ड आवंटन
अयोध्या



ABOUT MVBA

01 "MVBA" SCHEME

"MVBA" is a small inspired initiative to adjoin common man of India strongly into the main stream of society like other Indian government's scheme, "Beti Bachao, Pradhan Mantri Awas Yojana - Urban Pmay Pradhan Mantri Jan Dhan Yojana Scheme Common man are just one step away to grab a golden opportunity to own a individual plot in Swarna Nagri Ayodhya.

02 BUDGET FRIENDLY

We as MVBA work on a famous marketing concept of "Group Buying" It helps us save on huge marketing expenditure which is passed on to the buyer.

03 TIMELY DELIVERY

Advance and cumulative sales generates quick funds and translates into faster execution and timely possession. A huge advantage when projects of other builders are getting delayed. Advance and cumulative sales generates quick funds and translates into faster execution and timely possession.

04 EXPERIENCED & TRUSTED

"MVBA" has created a record of allotment of 1,40,000 sq. yard. Ploted area in different - different cities like Haridwar, Vrindavan, Ajmer and in Delhi NCR. Under its Experience Management and Faithful Existence in Society Till date.

05 LAND APPRECIATION

Since the company offer only in the growth hubs, after studying the future growth, potential and Government's trusted areas, the rates are sure to witness a sharp appreciation in near future.

06 PAYMENT OPTIONS

Group booking project approvals and future potential translate in to hassle-free loans from all the banks + Interest free EMI Available also who offer better interest rates and customize the terms of repayment to the buyer's advantage.



Ayodhya

Ayodhya which is also known as Saket and Ramnagari. It is a historically and religiously important city located in the state of Uttar Pradesh, India. It is situated on the banks of the sacred Saryu river and is the headquarters of the Ayodhya district. In history, it was also called the 'Kaushal district'. According to mythological beliefs, Suryavanshi/Raghuvanshi/Arkavanshi kings used to rule Ayodhya, in which Lord Shri Ram incarnated.



Shri Ram Birthplace

Hindus believe that Shri Ram was born in Ayodhya and there was a grand temple at his birthplace, which was demolished by the Mughal invader Babar, and a mosque was built there. Under the leadership of Rashtriya Swayamsevak Sangh and the Bharatiya Janata Party, there was a long movement to free this place and build a new temple there. On 6 December 1992, this disputed structure was demolished and a temporary temple of Shri Ram was built there. Presently a grand Ram temple is being constructed here which will be opened for darshan in 2024.

Kanak Bhawan

Kanak Bhawan is North-East of Ram Janmabhoomi, Ramkot in Ayodhya. Kanak Bhawan is one of the finest and famous temples of Ayodhya. It is believed that this building was gifted to Goddess Sita by Queen Kaikeyi immediately after her marriage to Lord Shri Ram. This is the private palace of Goddess Sita and Lord Rama.



Hanumangarhi

Located in the heart of Ayodhya, 76 steps lead to Hanumangarhi, one of the most popular temple complexes of Lord Hanuman in North India. It is a tradition that before visiting Ram temple one should first visit Lord Hanuman temple. When Lord Rama returned to Ayodhya after conquering Ravana, Hanumanji started living here. That is why it was named Hanumangarh or Hanuman Kot. It was from here that Hanumanji used to protect Ramkot. In the main temple, Pavansut sits on the lap of Mata Anjani.

Guptar Ghat

Guptar Ghat has its own distinct specialty. This is the ghat where Lord Shri Ram took Jalsamadhi. The beautiful view of Guptar Ghat situated on the banks of river Saryu with many small temples is captivating. Visitors come to this place with the desire to attain liberation. Guptar Ghat was renovated by Raja Darshan Singh in the 19th century. On this ghat, Ram Janaki Temple, Old Charan Paduka Temple, Noor Singh Temple and Hanuman Temple are the centers of faith of the people.



इवार्ना नगरी - 2

*We Are Offering A Holistic Lifestyle Enriched
With Modern Amenities And Assurances*

Welcome to Swarnanagri-2, a safe, and friendly residential community located in Ayodhya, residents enjoy a stress-free lifestyle within spirituality. With plot sizes ranging from 111 sq.yds. & 222 sq.yds. Land Owners have the freedom to design their homes just the way they want.

This gated society offers amenities for comfortable and Quality living, with well-kept roads perfect for building your dream home and lovely gardens suitable for everyone. Nearby facilities and services are easily accessible, making Swarnanagri-2 an excellent place to live and invest in Ayodhya's spiritual area.

AMENITIES



GATED SOCIETY



STREET LIGHTS



KIDS PLAY AREA



WATER SUPPLY



ELECTRICITY



WIDE ROADS



24 X 7 SECURITY

Prime Location with Great Accessibility



Shri Ram Janambhumi

Situated Just 3.4 Kilometres, Swarnanagri Enjoys Unrivalled Proximity To Other Key Landmarks, Ensuring Unparalleled Convenience For Its Residents

Ayodhya Railway Station

Only 4 Km Away, Facilitating Hassle-free Commuting.



Ayodhya International Airport

Accessible Within 5 Km Drive, Ensuring Seamless Connectivity For Frequent Travellers.

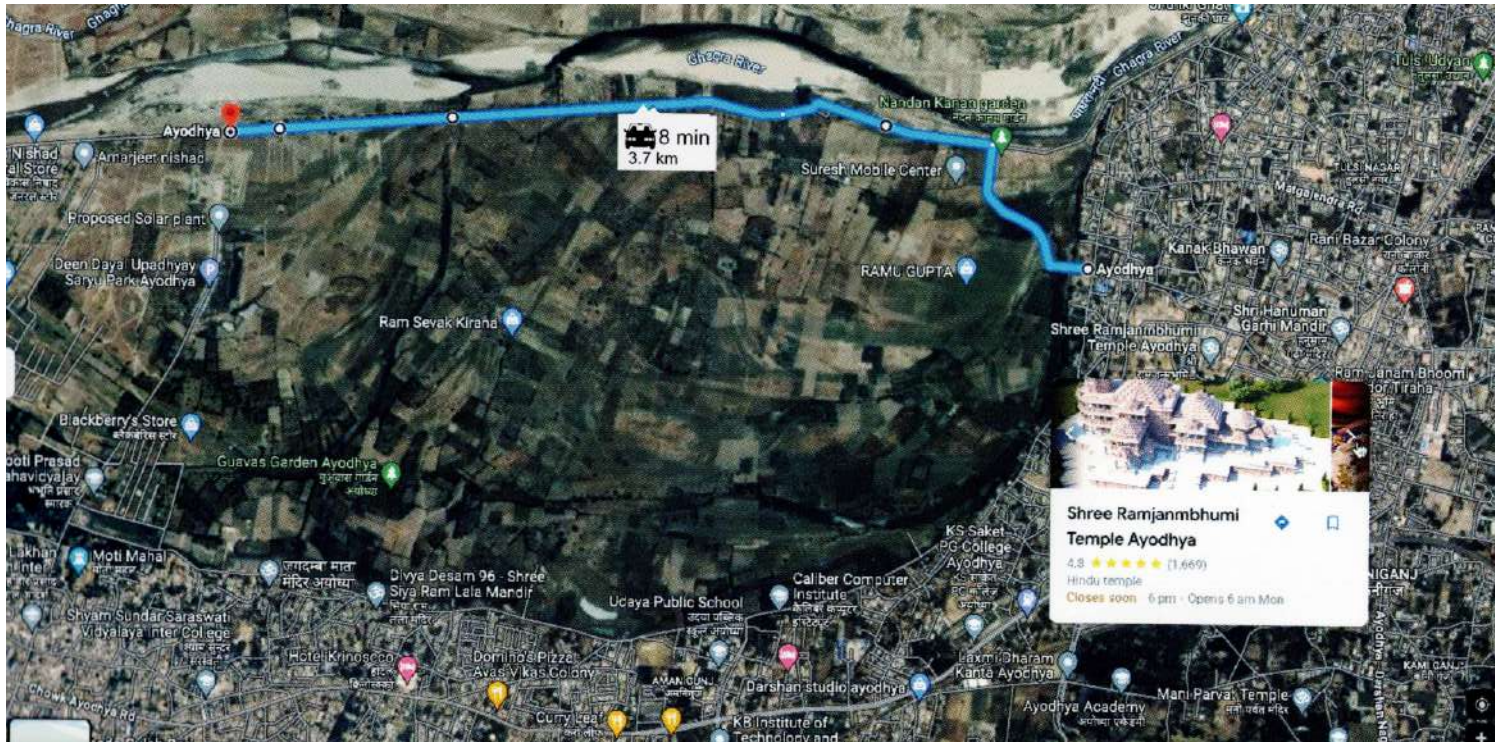


Bustling Bus Stand

Just 4 Km Away, Providing Easy Access To Intercity Transportation.

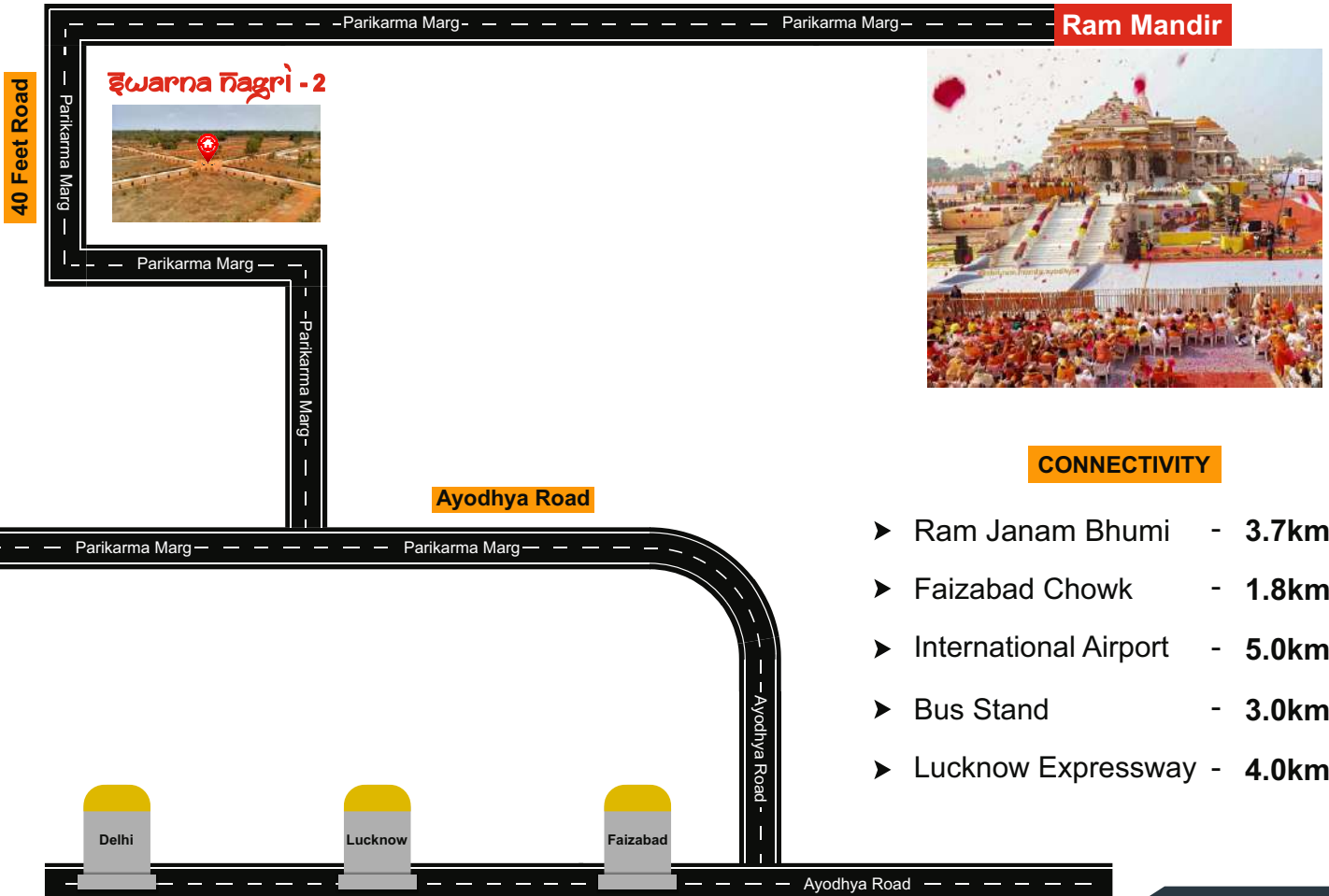


It's About Immersing Yourself In The Spiritual Ambience Of Ayodhya, As Swarnanagri-2 Offers Residents A Rare Opportunity To Experience This Spiritual Peace Every Day, Making It A Truly Unique And Enchanting Place To Call Home.



LOCATION MAP

35 MT Wide Ring Road



Spotlight on Ayodhya as development picks up pace

Pravara Dam
The second of three dams on the Pravara river, the Pravara Dam is a concrete gravity dam. It is the largest dam in India and the second largest in the world. The dam is 1,400 feet long and 100 feet high. It is located in the Western Ghats, near the town of Pravara. The dam is a concrete gravity dam. It is the largest dam in India and the second largest in the world. The dam is 1,400 feet long and 100 feet high. It is located in the Western Ghats, near the town of Pravara.

Shri Ram Temple
The Shri Ram Temple is a Hindu temple dedicated to Lord Rama. It is located in Ayodhya, India. The temple is a large, ornate structure with a central dome and many smaller domes. It is surrounded by a wall and has a large courtyard. The temple is a Hindu temple dedicated to Lord Rama. It is located in Ayodhya, India. The temple is a large, ornate structure with a central dome and many smaller domes. It is surrounded by a wall and has a large courtyard.

Shri Ram Temple
The Shri Ram Temple is a Hindu temple dedicated to Lord Rama. It is located in Ayodhya, India. The temple is a large, ornate structure with a central dome and many smaller domes. It is surrounded by a wall and has a large courtyard. The temple is a Hindu temple dedicated to Lord Rama. It is located in Ayodhya, India. The temple is a large, ornate structure with a central dome and many smaller domes. It is surrounded by a wall and has a large courtyard.

Shri Ram Temple
The Shri Ram Temple is a Hindu temple dedicated to Lord Rama. It is located in Ayodhya, India. The temple is a large, ornate structure with a central dome and many smaller domes. It is surrounded by a wall and has a large courtyard. The temple is a Hindu temple dedicated to Lord Rama. It is located in Ayodhya, India. The temple is a large, ornate structure with a central dome and many smaller domes. It is surrounded by a wall and has a large courtyard.

ग्रेटर अयोध्या को विकसित करने का रोडमैप तैयार

रिंग रोड से खुलनेवा ग्रेटर अयोध्या का रास्ता

भाजपा सरकार में राम नगरी अयोध्या का होगा विस्तार

81 किमी. परिधि में बनेगी रिंग रोड

THE HINDU
NEW DELHI THURSDAY 6 AUGUST 2020

Environment: History of the temple in the heart of the city

Centre: accepts Bharat Ratna for the temple

Death toll in explosion in the temple

Ram: Masked death in the temple

THE ASIAN AGE
NEW DELHI THURSDAY 6 AUGUST 2020

NATION | 4
Shivraj discharged from hospital, advised home quarantine for a week

SPORT | 8
Defending champion Rafael Nadal won't play US Open, slams schedule

TABLOID | 13
Jacqueline gets nostalgic as she looks back at her life

Modern symbol of Indian culture: Modi
PM launches construction of Ram temple at Ayodhya, says it is the beginning of a golden chapter

Kashmir under security blanket
Anniversary of Article 370 withdrawn

I don't have any grievance, says Prigant

PM Modi lays first brick of Ram Rajya
'LORD RAM LIVING IN TENTS FOR YEARS, WILL FINALLY GET A TEMPLE': PM MODI AT AYODHYA

Shri Ram Temple
The Shri Ram Temple is a Hindu temple dedicated to Lord Rama. It is located in Ayodhya, India. The temple is a large, ornate structure with a central dome and many smaller domes. It is surrounded by a wall and has a large courtyard. The temple is a Hindu temple dedicated to Lord Rama. It is located in Ayodhya, India. The temple is a large, ornate structure with a central dome and many smaller domes. It is surrounded by a wall and has a large courtyard.

The Indian EXPRESS
JOURNALISM OF COURAGE

Modi marks the Mandir
Aug 5, Aug 5: PM draws parallel with struggle for freedom

Opp responds by invoking Ram and unity, avoids BJP reference

One year of Aug 5: J&K I-G exits after talk of polls and 4G

my city
अमर उजाला

चौरासी कोस की परिधि में होगा अयोध्या धाम
चार दिनों में मुजर रहे चौरासी कोस इलाके के विकास की बनी योजना, दो माह में 31.5 किमी परिधि में इलाका विकास करने का बना खण्ड

विकास अयोध्या के लिए मुआवजा निर्धारण सार्वजनिक

BFSI
From the Economic Times

moneycontrol
Get PMO alerts

News Exclusives Leaders Speak Events Awards Webinars Brand Solutions More

Ram Mandir: UP gov't lines up Rs 85,000 crore investment for redevelopment of Ayodhya

Ayodhya Ram Mandir | Average property rates up 179% in 3 months, surge in online home search: Magicbricks

Ayodhya Ram Mandir: Land rates, which ranged from Rs 1,000 to 2,000 per sqft in 2019, are now at Rs 4,000 to 6,000 per sqft, according to a real estate consultancy.

FOR MOST OF US BUILDING
OUR DREAM HOME REMAINS A DREAM.

WHY?

Most of us are unable to identify the right place and the right time to build our house. Ideally, we should invest in a place when it is growing and not when it has grown. But by the time we recognise the potential of a place. It is too late and too expensive. MVBA, through its expert, spots places with great future potential when it is still affordable. Our team conducts an in-depth study of master plan as well as Govt. policies to get a thorough understanding of how cities are designed in present day as well as how they should be designed in the future. All our efforts are shaped towards building a progressive location for your future.



FINANCE AVAILABLE



Swarna Nagri Ayodhya

इ Swarna Nagri -2

मध्यम्वर्गीय भूखण्ड आवंटन
अयोध्या

Maraj Realty

D-52, Ground Floor, sector -2, Noida 201301

Website: www.marajrealty.com

Email: info@marajrealty.com

